



D8 Distillate
Sample Matrix:
CBD/HEMP
Derivative Products
(Inhalation - Heated)



License No. 800025015
FL License # CMTL-0003
CLIA No. 10D1094068

Certificate of Analysis

Compliance Test

Laughing Buddha
614 Main Ave
Logan, WV 25601

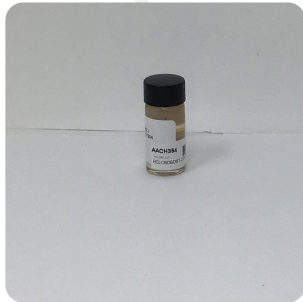
Batch # HCLCBD-BDST-2-21354
Batch Date: 2021-12-21
Extracted From: Hemp

Sampling Method: MSP 7.3.1
Test Reg State: Florida

Order # HCL211221-010001
Order Date: 2021-12-21
Sample # AACH354

Sampling Date: 2021-12-22
Lab Batch Date: 2021-12-22
Completion Date: 2021-12-27

Initial Gross Weight: 21.477 g



Product Image

Potency
Tested

Heavy Metals
Passed

2-3-Butanedione
Passed

Mycotoxins
Passed

Pesticides
Passed

Residual Solvents
Passed

Listeria Monocytogenes
Passed

Pathogenic
Passed

Vitamin E
Passed

Delta 8/Delta 10 Potency

Specimen Weight: 58.960 mg

Analyte	LOD (%)	LOQ (%)	Result (mg/g)	(%)
Delta-8 THC	0.000026	0.001	933.890	93.389
THCV	0.000007	0.001	<LOQ	<LOQ
Delta-9 THC	0.000013	0.001	<LOQ	<LOQ
Delta-10 THC	0.000003	0.001	<LOQ	<LOQ
CBN	0.000014	0.001	<LOQ	<LOQ
CBGA	0.00008	0.001	<LOQ	<LOQ
CBG	0.000248	0.001	<LOQ	<LOQ
CBDV	0.000065	0.001	<LOQ	<LOQ
CBDA	0.00001	0.001	<LOQ	<LOQ
CBD	0.000054	0.001	<LOQ	<LOQ
CBC	0.000018	0.001	<LOQ	<LOQ
THCA-A	0.000032	0.001	<LOQ	<LOQ

Tested (LCUV)

Potency Summary

Total Delta 8 93.389%	Total Delta 10 None Detected
Total THC None Detected	Total CBD None Detected
Total CBG None Detected	Total CBN None Detected
Other Cannabinoids None Detected	Total Cannabinoids 93.389%

Xueli Gao
Ph.D., DABT
Lab Toxicologist

Aixia Sun
D.H.Sc., M.Sc., B.Sc., MT (AAB)
Lab Director/Principal Scientist



Definitions and Abbreviations used in this report: *Total CBD = CBD + (CBD-A * 0.877), *Total CBDV = CBDV + (CBDVA * 0.87), *Total THC = THCA-A * 0.877 + Delta 9 THC, *Total THCV = THCV + (THCVA * 0.87), *CBG Total = (CBGA * 0.877) + CBG, *CBN Total = (CBNA * 0.877) + CBN, *Total CBC = CBC + (CBCA * 0.877), *Other Cannabinoids Total = Total Cannabinoids - All the listed cannabinoids on the summary section, *Total Detected Cannabinoids = Delta8-THC + Total CBN + CBT + Delta8-THCV + Total CBG + Total CBD + Total THCV + CBL + Total THC + Total CBC + Total CBDV + Delta10-THC, *Total THC-O-Acetate = Delta 8 THC-O-Acetate + THC-O-Acetate, *Analyte Details above show the Dry Weight Concentrations unless specified as 12% moisture concentration. (mg/ml) = Milligrams per Milliliter, LOQ = Limit of Quantitation, LOD = Limit of Detection, Dilution = Dilution Factor (ppb) = Parts per Billion, (%) = Percent, (cfu/g) = Colony Forming Unit per Gram (cfu/g) = Colony Forming Unit per Gram, LOD = Limit of Detection, (µg/g) = Microgram per Gram (ppm) = Parts per Million, (ppm) = (µg/g), (aw) = aw (area ratio) = Area Ratio, (mg/Kg) = Milligram per Kilogram, *Measurement of Uncertainty = +/- 10%



This report shall not be reproduced, without written approval, from ACS Laboratory. The results of this report relate only to the material or product analyzed. Test results are confidential unless explicitly waived otherwise. Accredited by a third-party accrediting body as a competent testing laboratory pursuant to ISO/IEC 17025 of the International Organization for Standardization.



D8 Distillate
Sample Matrix:
CBD/HEMP
Derivative Products
(Inhalation - Heated)



License No. 800025015
FL License # CMTL-0003
CLIA No. 10D1094068

Certificate of Analysis

Compliance Test

Laughing Buddha
614 Main Ave
Logan, WV 25601

Batch # HCLCBD-BDST-2-21354
Batch Date: 2021-12-21
Extracted From: Hemp

Sampling Method: MSP 7.3.1
Test Reg State: Florida

Order # HCL211221-010001
Order Date: 2021-12-21
Sample # AACH354

Sampling Date: 2021-12-22
Lab Batch Date: 2021-12-22
Completion Date: 2021-12-27

Initial Gross Weight: 21.477 g

H Heavy Metals **Passed**
(ICP-MS)
Specimen Weight: 254.200 mg
Dilution Factor: 2.000

Analyte	LOQ (ppb)	Action Level (ppb)	Result (ppb)	Analyte	LOQ (ppb)	Action Level (ppb)	Result (ppb)
Arsenic (As)	100	1500	<LOQ	Cadmium (Cd)	100	500	<LOQ
Lead (Pb)	100	500	<LOQ	Mercury (Hg)	100	3000	<LOQ

2,3-butanedione(Diacetyl) **Passed**
(GCMS)
Specimen Weight: 110.800 mg
Dilution Factor: 500.000

Analyte	LOQ (ppm)	Result (ppm)
2,3-Butanedione	0.024	<LOQ

Mycotoxins **Passed**
(LCMS)
Specimen Weight: 152.100 mg
Dilution Factor: 9.862

Analyte	LOQ (ppb)	Action Level (ppb)	Result (ppb)	Analyte	LOQ (ppb)	Action Level (ppb)	Result (ppb)
Aflatoxin B1	6	20	<LOQ	Aflatoxin B2	6	20	<LOQ
Aflatoxin G1	6	20	<LOQ	Aflatoxin G2	6	20	<LOQ
Ochratoxin A	12	20	<LOQ				

Xueli Gao
Xueli Gao
Ph.D., DABT
Lab Toxicologist

Aixia Sun
Aixia Sun
D.H.Sc., M.Sc., B.Sc., MT (AAB)
Lab Director/Principal Scientist



Definitions and Abbreviations used in this report: *Total CBD = CBD + (CBD-A * 0.877), *Total CBDV = CBDV + (CBDVA * 0.87), *Total THC = THCA-A * 0.877 + Delta 9 THC, *Total THCV = THCV + (THCVA * 0.87), *CBG Total = (CBGA * 0.877) + CBG, *CBN Total = (CBNA * 0.877) + CBN, *Total CBC = CBC + (CBCA * 0.877), *Other Cannabinoids Total = Total Cannabinoids - All the listed cannabinoids on the summary section, *Total Detected Cannabinoids = Delta8-THC + Total CBN + CBT + Delta8-THCV + Total CBG + Total CBD + Total THCV + CBL + Total THC + Total CBC + Total CBDV + Delta10-THC, *Total THC-O-Acetate = Delta 8 THC-O-Acetate + THC-O-Acetate, *Analyte Details above show the Dry Weight Concentrations unless specified as 12% moisture concentration. (mg/ml) = Milligrams per Milliliter, LOQ = Limit of Quantitation, LOD = Limit of Detection, Dilution = Dilution Factor (ppb) = Parts per Billion, (%) = Percent, (cfu/g) = Colony Forming Unit per Gram (cfu/g) = Colony Forming Unit per Gram, , LOD = Limit of Detection, (µg/g) = Microgram per Gram (ppm) = Parts per Million, (ppm) = (µg/g), (aw) = aw (area ratio) = Area Ratio, (mg/Kg) = Milligram per Kilogram, *Measurement of Uncertainty = +/- 10%



This report shall not be reproduced, without written approval, from ACS Laboratory. The results of this report relate only to the material or product analyzed. Test results are confidential unless explicitly waived otherwise. Accredited by a third-party accrediting body as a competent testing laboratory pursuant to ISO/IEC 17025 of the International Organization for Standardization.



License No. 800025015
FL License # CMTL-0003
CLIA No. 10D1094068

Certificate of Analysis

Compliance Test

Laughing Buddha
614 Main Ave
Logan, WV 25601

Batch # HCLCBD-BDST-2-21354
Batch Date: 2021-12-21
Extracted From: Hemp

Sampling Method: MSP 7.3.1
Test Reg State: Florida

Order # HCL211221-010001
Order Date: 2021-12-21
Sample # AACH354

Sampling Date: 2021-12-22
Lab Batch Date: 2021-12-22
Completion Date: 2021-12-27

Initial Gross Weight: 21.477 g

Pesticides FL V4 **Passed**
(LCMS/GCMS)
Specimen Weight: 152.100 mg
Dilution Factor: 9.862

Analyte	LOQ (ppb)	Action Level (ppb)	Result (ppb)	Analyte	LOQ (ppb)	Action Level (ppb)	Result (ppb)
Abamectin	28.23	300	<LOQ	Acephate	30	3000	<LOQ
Acequinocyl	48	2000	<LOQ	Acetamiprid	30	3000	<LOQ
Aldicarb	30	100	<LOQ	Azoxystrobin	10	3000	<LOQ
Bifentazate	30	3000	<LOQ	Bifenthrin	30	500	<LOQ
Boscalid	10	3000	<LOQ	Captan	30	3000	<LOQ
Carbaryl	10	500	<LOQ	Carbofuran	10	100	<LOQ
Chlorantraniliprole	10	3000	<LOQ	Chlordane	10	100	<LOQ
Chlorfenapyr	30	100	<LOQ	Chloromequat Chloride	10	3000	<LOQ
Chlorpyrifos	30	100	<LOQ	Clofentezine	30	500	<LOQ
Coumaphos	48	100	<LOQ	Cyfluthrin	30	1000	<LOQ
Cypermethrin	30	1000	<LOQ	Daminozide	30	100	<LOQ
Diazinon	30	200	<LOQ	Dichlorvos	30	100	<LOQ
Dimethoate	30	100	<LOQ	Dimethomorph	48	3000	<LOQ
Ethoprophos	30	100	<LOQ	Etofenprox	30	100	<LOQ
Etoxazole	30	1500	<LOQ	Fenhexamid	10	3000	<LOQ
Fenoxycarb	30	100	<LOQ	Fenproximate	30	2000	<LOQ
Fipronil	30	100	<LOQ	Fonicamid	30	2000	<LOQ
Fludioxonil	48	3000	<LOQ	Hexythiazox	30	2000	<LOQ
Imazalil	30	100	<LOQ	Imidacloprid	30	3000	<LOQ
Kresoxim Methyl	30	1000	<LOQ	Malathion	30	2000	<LOQ
Metalaxyl	10	3000	<LOQ	Methiocarb	30	100	<LOQ
Methomyl	30	100	<LOQ	methyl-Parathion	10	100	<LOQ
Mevinphos	10	100	<LOQ	Myclobutanil	30	3000	<LOQ
Naled	30	500	<LOQ	Oxamyl	30	500	<LOQ
Paclotrazol	30	100	<LOQ	Pentachloronitrobenzene	10	200	<LOQ
Permethrin	30	1000	<LOQ	Phosmet	30	200	<LOQ
Piperonylbutoxide	30	3000	<LOQ	Prallethrin	30	400	<LOQ
Propiconazole	30	1000	<LOQ	Propoxur	30	100	<LOQ
Pyrethrins	30	1000	<LOQ	Pyridaben	30	3000	<LOQ
Spinetoram	10	3000	<LOQ	Spinosad	30	3000	<LOQ
Spiromesifen	30	3000	<LOQ	Spirotetramat	30	3000	<LOQ
Spiroxamine	30	100	<LOQ	Tebuconazole	30	1000	<LOQ
Thiacloprid	30	100	<LOQ	Thiamethoxam	30	1000	<LOQ
Trifloxystrobin	30	3000	<LOQ				

Xueli Gao
Xueli Gao
Ph.D., DABT
Lab Toxicologist

Aixia Sun
Aixia Sun
D.H.Sc., M.Sc., B.Sc., MT (AAB)
Lab Director/Principal Scientist



Definitions and Abbreviations used in this report: *Total CBD = CBD + (CBD-A * 0.877), *Total CBDV = CBDV + (CBDVA * 0.87), *Total THC = THCA-A * 0.877 + Delta 9 THC, *Total THCv = THCV + (THCVA * 0.87), *CBG Total = (CBGA * 0.877) + CBG, *CBN Total = (CBNA * 0.877) + CBN, *Total CBC = CBC + (CBCA * 0.877), *Other Cannabinoids Total = Total Cannabinoids - All the listed cannabinoids on the summary section, *Total Detected Cannabinoids = Delta8-THC + Total CBN + CBT + Delta8-THCV + Total CBG + Total CBD + Total THCv + CBL + Total THC + Total CBC + Total CBDV + Delta10-THC, *Total THC-O-Acetate = Delta 8 THC-O-Acetate + THC-O-Acetate, *Analyte Details above show the Dry Weight Concentrations unless specified as 12% moisture concentration. (mg/ml) = Milligrams per Milliliter, LOQ = Limit of Quantitation, LOD = Limit of Detection, Dilution = Dilution Factor (ppb) = Parts per Billion, (%) = Percent, (cfu/g) = Colony Forming Unit per Gram (cfu/g) = Colony Forming Unit per Gram, , LOD = Limit of Detection, (µg/g) = Microgram per Gram (ppm) = Parts per Million, (ppm) = (µg/g), (aw) = aw (area ratio) = Area Ratio, (mg/Kg) = Milligram per Kilogram, *Measurement of Uncertainty = +/- 10%



This report shall not be reproduced, without written approval, from ACS Laboratory. The results of this report relate only to the material or product analyzed. Test results are confidential unless explicitly waived otherwise. Accredited by a third-party accrediting body as a competent testing laboratory pursuant to ISO/IEC 17025 of the International Organization for Standardization.



License No. 800025015
FL License # CMTL-0003
CLIA No. 10D1094068

Certificate of Analysis

Compliance Test

Laughing Buddha
614 Main Ave
Logan, WV 25601

Batch # HCLCBD-BDST-2-21354
Batch Date: 2021-12-21
Extracted From: Hemp

Sampling Method: MSP 7.3.1
Test Reg State: Florida

Order # HCL211221-010001
Order Date: 2021-12-21
Sample # AACH354

Sampling Date: 2021-12-22
Lab Batch Date: 2021-12-22
Completion Date: 2021-12-27

Initial Gross Weight: 21.477 g

Residual Solvents - FL (CBD) **Passed**
(GCMS)

Specimen Weight: 110.800 mg
Dilution Factor: 500.000

Analyte	LOQ (ppm)	Action Level (ppm)	Result (ppm)	Analyte	LOQ (ppm)	Action Level (ppm)	Result (ppm)
1,1-Dichloroethene	0.16	8	<LOQ	1,2-Dichloroethane	0.04	5	<LOQ
Acetone	2.08	5000	<LOQ	Acetonitrile	1.17	410	<LOQ
Benzene	0.02	2	<LOQ	Butanes	2.5	2000	<LOQ
Chloroform	0.04	60	<LOQ	Ethanol	2.78	5000	<LOQ
Ethyl Acetate	1.11	5000	<LOQ	Ethyl Ether	1.39	5000	<LOQ
Ethylene Oxide	0.1	5	<LOQ	Heptane	1.39	5000	<LOQ
Hexane	1.17	290	<LOQ	Isopropyl alcohol	1.39	500	<LOQ
Methanol	0.69	3000	<LOQ	Methylene chloride	2.43	600	<LOQ
Pentane	2.08	5000	<LOQ	Propane	5.83	2100	<LOQ
Toluene	2.92	890	<LOQ	Total Xylenes	2.92	2170	<LOQ
Trichloroethylene	0.49	80	<LOQ				

Listeria Monocytogenes **Passed**
(qPCR)

Specimen Weight: 985.400 mg
Dilution Factor: 1.000

Analyte	Action Level (cfu/g)	Result
Listeria Monocytogenes	1	Absence in 1g

Xueli Gao
Xueli Gao
Ph.D., DABT
Lab Toxicologist

Aixia Sun
Aixia Sun
D.H.Sc., M.Sc., B.Sc., MT (AAB)
Lab Director/Principal Scientist



Definitions and Abbreviations used in this report: *Total CBD = CBD + (CBD-A * 0.877), *Total CBDV = CBDV + (CBDVA * 0.87), *Total THC = THCA-A * 0.877 + Delta 9 THC, *Total THCV = THCV + (THCVA * 0.87), *CBG Total = (CBGA * 0.877) + CBG, *CBN Total = (CBNA * 0.877) + CBN, *Total CBC = CBC + (CBCA * 0.877), *Other Cannabinoids Total = Total Cannabinoids - All the listed cannabinoids on the summary section, *Total Detected Cannabinoids = Delta8-THC + Total CBN + CBT + Delta8-THCV + Total CBG + Total CBD + Total THC + CBL + Total THC + Total CBC + Total CBDV + Delta10-THC, *Total THC-O-Acetate = Delta 8 THC-O-Acetate + THC-O-Acetate, *Analyte Details above show the Dry Weight Concentrations unless specified as 12% moisture concentration. (mg/ml) = Milligrams per Milliliter, LOQ = Limit of Quantitation, LOD = Limit of Detection, Dilution = Dilution Factor (ppb) = Parts per Billion, (%) = Percent, (cfu/g) = Colony Forming Unit per Gram (cfu/g) = Colony Forming Unit per Gram, LOD = Limit of Detection, (µg/g) = Microgram per Gram (ppm) = Parts per Million, (ppm) = (µg/g), (aw) = aw (area ratio) = Area Ratio, (mg/Kg) = Milligram per Kilogram, *Measurement of Uncertainty = +/- 10%



This report shall not be reproduced, without written approval, from ACS Laboratory. The results of this report relate only to the material or product analyzed. Test results are confidential unless explicitly waived otherwise. Accredited by a third-party accrediting body as a competent testing laboratory pursuant to ISO/IEC 17025 of the International Organization for Standardization.



License No. 800025015
FL License # CMTL-0003
CLIA No. 10D1094068

Certificate of Analysis

Compliance Test

Laughing Buddha
614 Main Ave
Logan, WV 25601

Batch # HCLCBD-BDST-2-21354
Batch Date: 2021-12-21
Extracted From: Hemp

Sampling Method: MSP 7.3.1
Test Reg State: Florida

Order # HCL211221-010001
Order Date: 2021-12-21
Sample # AACH354

Sampling Date: 2021-12-22
Lab Batch Date: 2021-12-22
Completion Date: 2021-12-27

Initial Gross Weight: 21.477 g

Pathogenic SAE (qPCR)

Specimen Weight: 276.580 mg

Dilution Factor: 1.000

Passed
(qPCR)

Analyte	Action Level (cfu/g)	Result (cfu/g)	Analyte	Action Level (cfu/g)	Result (cfu/g)
Aspergillus (Flavus, Fumigatus, Niger, Terreus)	1	Absence in 1g	E.Coli	1	Absence in 1g
			Salmonella	1	Absence in 1g

Vitamin E (Tocopheryl Acetate)

Specimen Weight: 152.100 mg

Dilution Factor: 9.862

Passed
(LC-MS)

Analyte	Result (ppb)
Vitamin E Acetate	<LOQ

Xueli Gao
Xueli Gao
Ph.D., DABT
Lab Toxicologist

Aixia Sun
Aixia Sun
D.H.Sc., M.Sc., B.Sc., MT (AAB)
Lab Director/Principal Scientist



Definitions and Abbreviations used in this report: *Total CBD = CBD + (CBD-A * 0.877), *Total CBDV = CBDV + (CBDVA * 0.87), *Total THC = THCA-A * 0.877 + Delta 9 THC, *Total THCV = THCV + (THCVA * 0.87), *CBG Total = (CBGA * 0.877) + CBG, *CBN Total = (CBNA * 0.877) + CBN, *Total CBC = CBC + (CBCA * 0.877), *Other Cannabinoids Total = Total Cannabinoids - All the listed cannabinoids on the summary section, *Total Detected Cannabinoids = Delta8-THC + Total CBN + CBT + Delta8-THCV + Total CBG + Total CBD + Total THCV + CBL + Total THC + Total CBC + Total CBDV + Delta10-THC, *Total THC-O-Acetate = Delta 8 THC-O-Acetate + THC-O-Acetate, *Analyte Details above show the Dry Weight Concentrations unless specified as 12% moisture concentration. (mg/ml) = Milligrams per Milliliter, LOQ = Limit of Quantitation, LOD = Limit of Detection, Dilution = Dilution Factor (ppb) = Parts per Billion, (%) = Percent, (cfu/g) = Colony Forming Unit per Gram (cfu/g) = Colony Forming Unit per Gram, , LOD = Limit of Detection, (µg/g) = Microgram per Gram (ppm) = Parts per Million, (ppm) = (µg/g), (aw) = aw (area ratio) = Area Ratio, (mg/Kg) = Milligram per Kilogram, *Measurement of Uncertainty = +/- 10%



This report shall not be reproduced, without written approval, from ACS Laboratory. The results of this report relate only to the material or product analyzed. Test results are confidential unless explicitly waived otherwise. Accredited by a third-party accrediting body as a competent testing laboratory pursuant to ISO/IEC 17025 of the International Organization for Standardization.